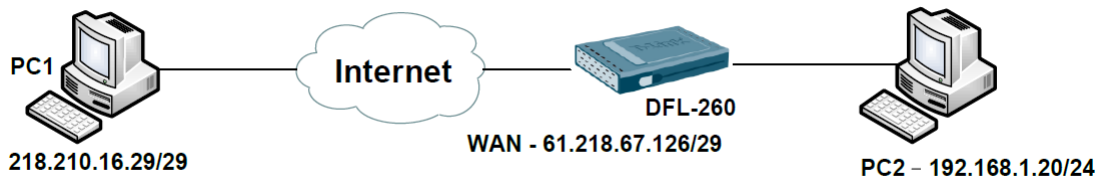


HOW TO SETUP IPSec vpn TUNNEL WITH FREE SHREW IPSec VPN SOFTWARE AND DFL FIREWALL

To download the IPSec VPN software, please check the following link:
<http://www.shrew.net/>

Set up Shrew Sofr VPN tool to connection IKE Configmode VPN.

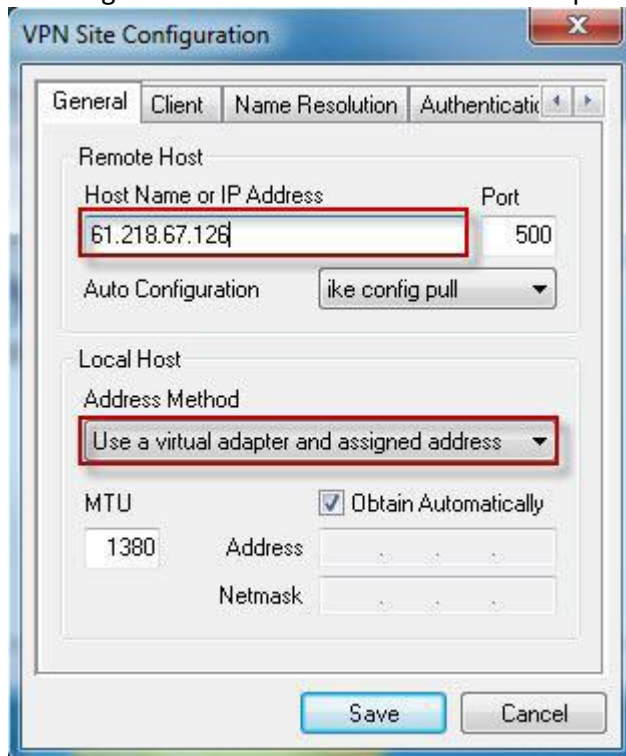
[Topology]



[Setup in PC1]

General Tab

1. Set up DFL IP in "Host Name or IP Address"
2. Change Address Method "Use a virtual adapter and assigned address"

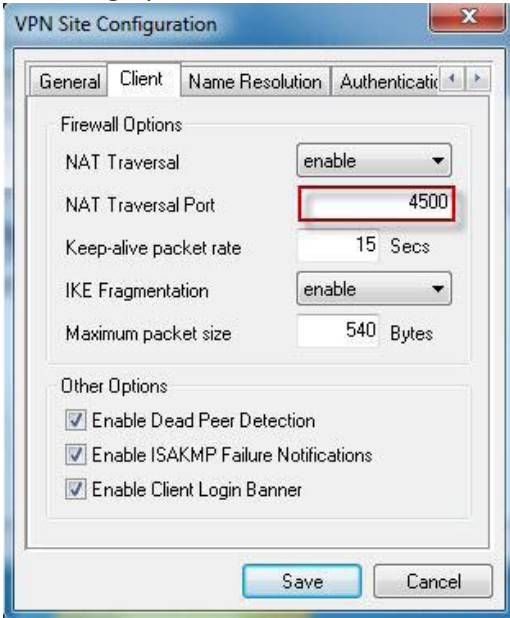


3. If PC1 IKE service port it's not setting default. You have to change this tool port number and firewall port number.



Client Tab

1. Setting by default. Make sure NAT traversal port number.

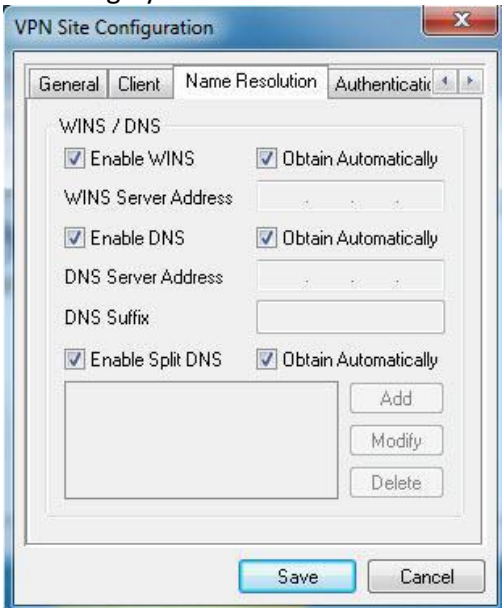


2. You can check firewall port number.



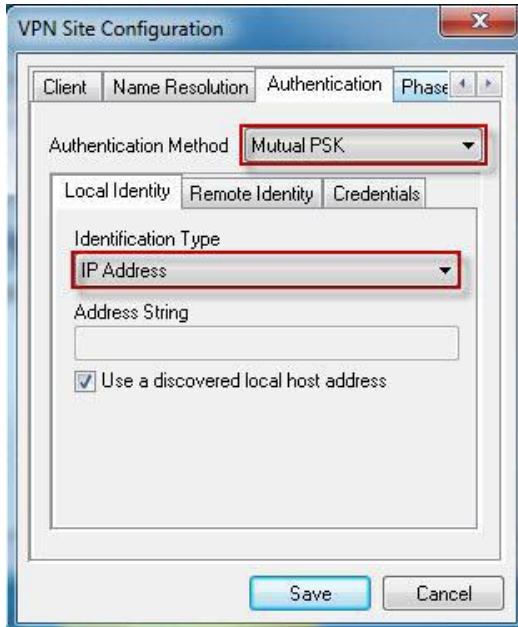
Name Resolution Tab

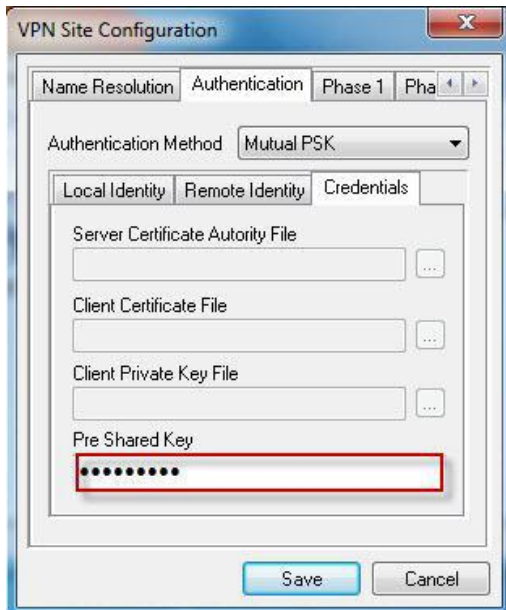
1. Setting by default.



Authentication Tab

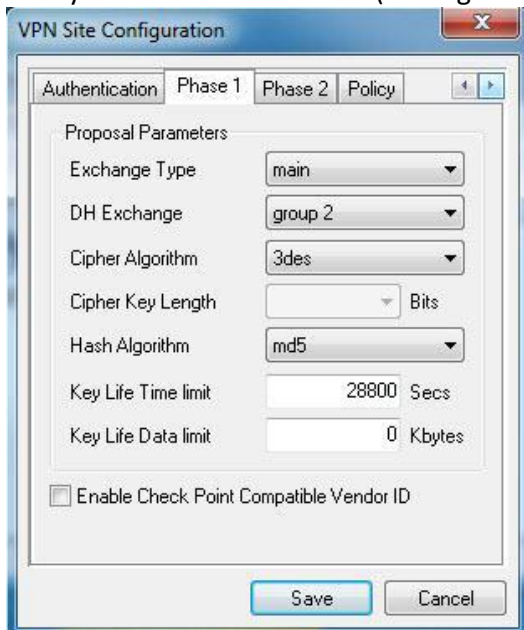
1. Authentication Method chose "Mutual PSK"
2. Local Identity Type chose "IP Address"
3. Remote Identity Type chose "IP Address"
4. Credentials enter your Pre Shared Key



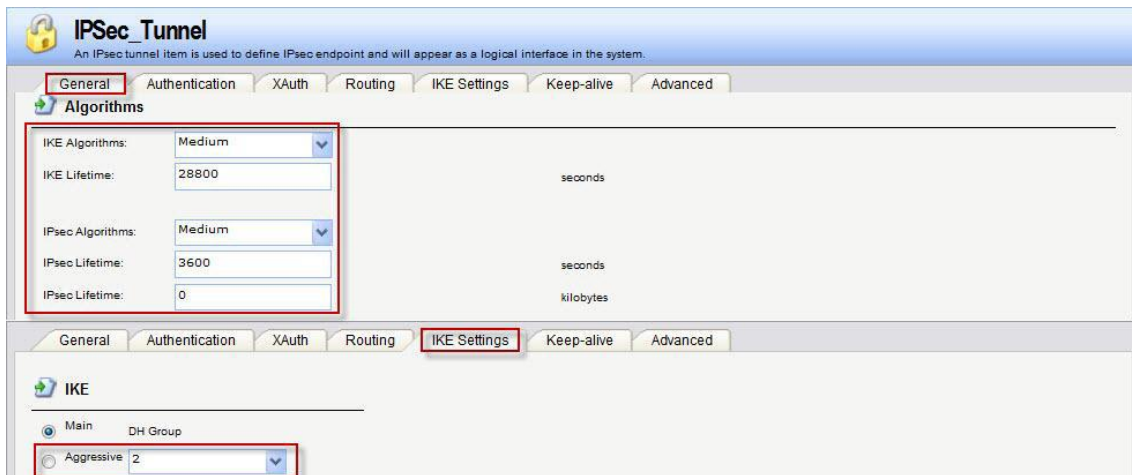


Phase 1

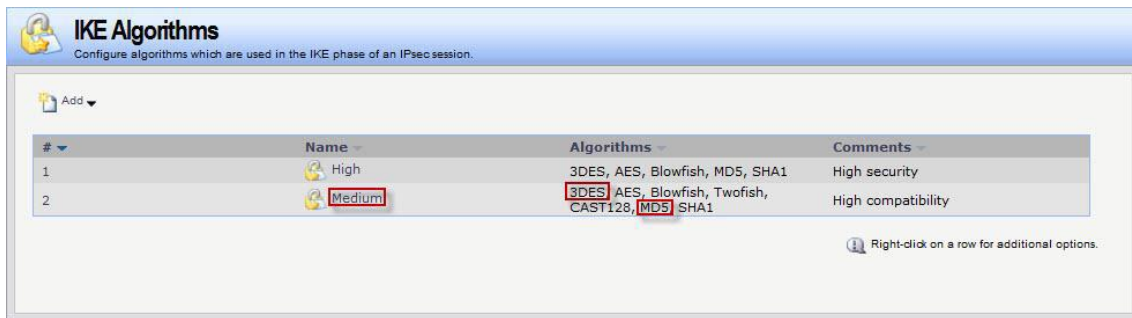
1. Exchange Type "Main"
2. DH Exchange chose "group2"
3. Cipher Algorithm "3des"(Any type like your firewall setting)
4. Hash Algorithm "md5"
5. Key Life Time limit "28800"(Setting like your fire setting)



FIREWALL CONFIGURATION > Interfaces > IPsec

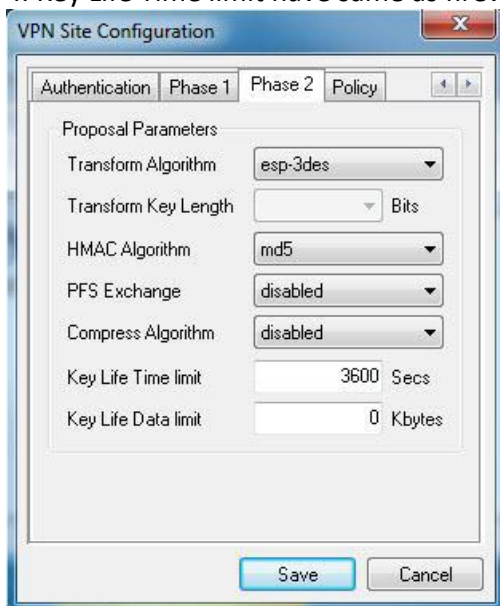


VPN Objects > IKE Algorithms



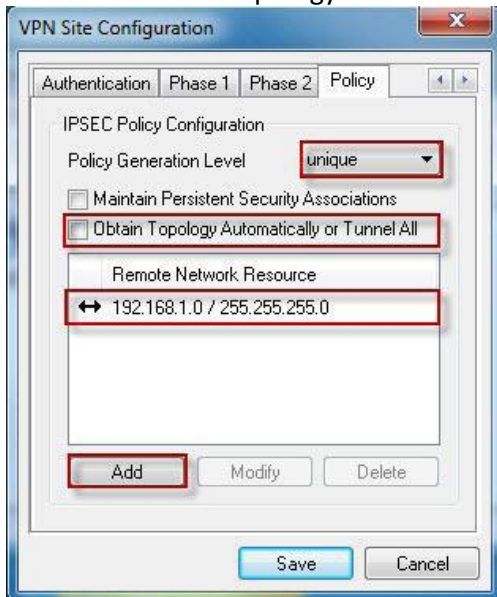
Phase 2

1. Transform Algorithm chose “esp-3des”.
2. HMAC Algorithm chose md5.
3. Disable PFS Exchange and Compress Algorithm.
4. Key Life Time limit have same as firewall. (Interfaces > IPsec)



Policy

1. Policy Generation Level “unique”.
2. Cancel “Obtain Topology Automatically or Tunnel All” and add PC2 LAN net.



When you login VPN tunnel you can check information in Shrew Soft.

